



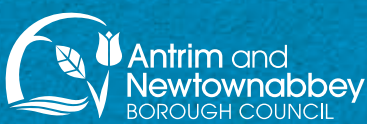
Love Living Here

Community

DRAFT ACTION PLAN

MARCH 2024

Facilitated by



ON THE ROAD TO A BETTER BOROUGH



vibrant places



prosperity



sustainability

leisure



innovation



travel



healthcare



education



community life



volunteering



achieving potential



lifelong learning



business



entrepreneurship



wellbeing



transport



Community

PLAN REVIEW

THE LOVE LIVING HERE COMMUNITY PLAN WAS PUBLISHED IN 2017 BY ANTRIM AND NEWTOWNABBEY BOROUGH COUNCIL AND IS THE KEY DOCUMENT OUTLINING THE PARTNERSHIP APPROACH TO INITIATIVES AND PROGRAMMES IN THE ANTRIM AND NEWTOWNABBEY AREA.

As we approach the mid-way point in the Love Living Here Community Plan which runs to 2030, this is the opportune time to take stock of the successes achieved in partnership with statutory partners as well as looking to the future. It is also an opportunity to refocus on the priorities from the original plan and ensure that they are relevant for the current environment. After engagement with key statutory partners and community groups, the shift in context post Covid-19 and through the continuing cost of living crisis, it is now more crucial than ever that effective partnership working is used to deliver for our residents.

The review has explored the current structures of the Community Planning process and sought to align these more closely with the new Corporate Strategy for Antrim and Newtownabbey Borough Council and to be more reflective of the evolving priorities of our communities and Statutory Partners.



THE Outcomes

1 OUR CITIZENS ENJOY GOOD HEALTH AND WELLBEING



2 OUR CITIZENS LIVE IN CONNECTED, SAFE, CLEAN AND VIBRANT PLACES



3 OUR CITIZENS BENEFIT FROM ECONOMIC PROSPERITY



4 OUR CITIZENS ACHIEVE THEIR FULL POTENTIAL



WILDLY IMPORTANT GOAL
OUR VULNERABLE PEOPLE ARE SUPPORTED




ANTRIM AND NEWTOWNABBEY
**COMMUNITY PLANNING
FRAMEWORK**



THE WIDER Context

LOVE LIVING HERE OUTCOME	RELATED PROGRAMME FOR GOVERNMENT OUTCOME(S)
1 OUR CITIZENS ENJOY GOOD HEALTH AND WELLBEING	We enjoy long healthy active lives
	We care for others and help those in need
2 OUR CITIZENS LIVE IN CONNECTED, SAFE, CLEAN AND VIBRANT PLACES	We have created a place where people want to live and work, to visit and invest
	We connect people and opportunities through our infrastructure
	We have a safe community where people respect each other and the law
	We live and work sustainably - protecting the environment
	We are an innovative, creative society, where people can fulfil their potential
	We are a shared society that respects diversity
3 OUR CITIZENS BENEFIT FROM ECONOMIC PROSPERITY	We prosper through a strong competitive regionally balanced economy
	We have more people working in better jobs
	We have a more equal society
4 OUR CITIZENS ACHIEVE THEIR FULL POTENTIAL	We have an innovative creative society where people fulfil their potential
	We give our children and young people the best start in life
	We have a more equal society
WILDLY IMPORTANT GOAL OUR VULNERABLE PEOPLE ARE SUPPORTED	We care for others and help those in need
	We give our children and young people the best start in life
	We have a more equal society

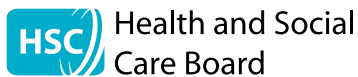
The Community Plan for Antrim and Newtownabbey sits within a framework of regional strategies and priorities for action. Each of the strategies aims to make life better for the people of Northern Ireland (NI) and improve our economic, social, educational and environmental prospects in the future. It is therefore important to capture and understand what the Community Plan can do to assist the achievement of these strategic objectives and how they can help to inform the actions we take at a local level.

At a regional level, the Programme for Government provides the framework for the development and delivery of public policy. The ambitions of our Community Plan echo at a local level the goals of the Programme for Government.



OUR STATUTORY *Partners*

OUR PARTNERS INCLUDE:



PRINCIPLES

THE FOUR OUTCOMES IN THE COMMUNITY PLAN ARE BASED ON THE FOLLOWING EIGHT PRINCIPLES. THE PRINCIPLES ARE IMPORTANT TO DEVELOPING A COMMUNITY PLAN WHICH WILL MEET THE NEEDS OF ALL THE CITIZENS OF OUR BOROUGH.

EQUALITY

The statistical evidence has shown that inequalities exist across the outcome themes. Proactive measures and targeting of areas most in need will aim to ensure that the varying social and economic needs of communities across the area are addressed. The overall aim will be to raise living standards in the most deprived areas up to at least the average of the rest.

SUSTAINABILITY

We wish to adopt a sustainable approach to social, environmental and physical development. This means making sure that the impact of what we do is long term and based on the needs of our citizens. We also want to make sure we protect the valuable built and natural environment that exists in the Borough.

CONNECTIVITY

We need to improve the social and physical connections throughout the Borough. This includes examining and seeking ways to improve our roads, paths, transport networks and digital connectivity.

We would also like to improve the social connections between residents across our Borough creating greater cohesion.

OPPORTUNITY

We are fortunate that there are a lot of positive qualities about our Borough including our schools and colleges and the variety of high quality businesses based here. We want to build on this and increase opportunities for our citizens in training, education, and employment. We want our first class leisure facilities to continue to provide opportunities for participation in a range of leisure activities.

INCLUSIVITY

We want to promote a culture of tolerance, acceptance and inclusivity for all our citizens, which will link all elements of the Community Plan.

VITALITY

We need to increase or restore vitality to communities both physically and socially by providing citizens with opportunities to be part of popular and inclusive events and activity in their area.

CAPABILITY

We want our citizens to be able to take advantage of any opportunities created through Community Planning. At the moment, this ability varies across different communities and we want to address this. The different skills levels across the Borough can act as a barrier to employment and enterprise and we want to find solutions to address this.

COMPASSION

We want to care for and support our neighbours and the vulnerable within our community. Social responsibility will be built into the Community Plan and is reflected in our vision for Antrim and Newtownabbey.



Community

PLANNING PARTNERSHIP STRUCTURE 2017



SETTING CONTEXT

New Environment

POST COVID-19

The pandemic impacted on all areas of life for our residents and Community Planning was no exception. All priorities for Council, Statutory Partners and the community voluntary sector within the Borough shifted toward minimising the impact of the pandemic. As we emerge from the pandemic this is now the chance to refocus on the Community Plan and how it can help to improve the lives of our residents.

Previous restrictions have transformed how our residents use the Council’s parks and open spaces for recreation, leisure and enjoyment. People have also changed their behaviours in the way that they shop and travel and we are all more aware about our impact on our environment. The challenge for the Community Planning Partnership is how to take cognisance of these changes in attitudes and lifestyles and align them to the Community Plan.



COST OF LIVING

Antrim and Newtownabbey Borough Council and its residents have not escaped the cost of living crisis which has been increasingly impacting on budgets and service provision. Many within the Borough are facing the impact of increasing energy, food and fuel prices, with inflation at its highest rate in 40 years.

This crisis has affected the most vulnerable people within the Borough most and as such working together with our Statutory Partners to lessen the impact of the crisis has become more important than ever.

REVISING THE PLAN:

fit for Purpose



In 2023 the existing Love Living Here: Community Plan underwent a strategic review (2017- 2023). This provided the platform to evaluate the successes achieved by the Partnership as well as to look to the future in supporting and refocussing our priorities, given the changing environment since the original plan was launched.

The review provided the opportunity to explore the current structures, thematics, principles and importantly the deliverable actions so as to ensure that the plan was both future proofed and allowed for the development of new and emerging needs and trends.

Throughout the latter part of 2023 the Council, alongside both its community and statutory partners engaged in a number of strategic planning workshops to consider what the new and emerging priorities should be within the plan and how these could be delivered collectively over the next 6 years.

The consultative workshops focused on the 3 strategic key thematic areas (Place, People & Prosperity) and a new theme 'Our Planet', which was added to take account of the complex range of needs and challenges associated with supporting our aspirations of being both sustainable and importantly providing additional access to green spaces.

The Draft Action Plan takes account of the information discussed and the future aspirations and initiatives highlighted during the consultative process. The Draft Action Plan showcases how the Council, statutory partners and the community and voluntary sector deliver upon the 4 strategic key action areas until 2030.

We want to take advantage of the opportunities and tackle the significant challenges we face, some specific to our circumstances and others brought on by external factors. The Draft Action Plan reflects both our aspirations as well as passion to ensure we make the best of both our current resources and potential opportunities.

We believe that by focusing on the 4 strategic key deliverable areas over the life of the plan this will ensure the accomplishment of both the Plan but more importantly the realisation of all the benefits and outcomes which can be shared amongst all our citizens upon its successful delivery.

Each of the 4 strategic thematic areas will contain a number of sub actions which will shape how the overall plan will be delivered and success is measured over the next number of years.





PEOPLE

This key strategic area sets out how the Community Plan intends to deliver and support our local people reach their full potential, regardless of their age or social profile. In order to achieve this, we need to ensure that we can support and grow a thriving community and voluntary sector and champion our next generations of volunteers across a range of interests.

Importantly we also need to support and empower people to make sensible decisions about their own mental health and well-being whilst working together to improve the quality of life for all our citizens.

PLACE

Providing an environment that allows our local people to thrive and develop whilst making certain their safety is a vital component of our plan. Ensuring that people who want to live within the Borough can access both social and affordable housing whilst providing a clean and safe surrounding is also a major part of delivering on this strategic area.



PROSPERITY

Prosperity and enrichment are a strong reflection of how well a community is achieving and is central in showcasing our passion and commitment to local growth.

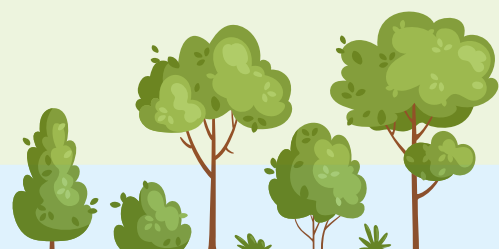
Helping and supporting our local business people whilst ensuring that we provide local people with the skills and knowledge required to maximise new opportunities to our future successes.

Notably we also have to ensure that the local infrastructure, connectivity and regeneration is improving to meet demand and we believe our plan showcases how we will collectively deliver upon these specialised needs over the next 6 years.

PLANET

Promoting greater sustainability right across the Borough whilst aiming to provide more access to greenways and areas of natural beauty, whilst looking to ensure they are protected, can be complex.

We believe that our plan takes account of how best we can educate our people to ensure we protect our natural environment and tackle climate change whilst meeting the therapeutic needs of our people for additional green spaces to connect and come alongside nature.



ACTION LIST *People*



ACTION

MEASURES/ INDICATORS

Creating a strong and vibrant community and voluntary sector - advocate, champion and maintain volunteering across the Borough.

Increase capacity within our CVS through effective recruitment, retention and re skilling of volunteers and community leaders:

- Develop a volunteer framework and strategy for ANBC.
- Develop and deliver an annual capacity building programme.
- Spotlight volunteering roles and opportunities across the Borough.
- Recognise and celebrate our volunteer champions.
- Create Community Forum Development.

Championing physical and mental wellness - implement the take 5 framework within the workplace, schools, and the wider community.

Implement a whole systems approach to tackling Obesity across the Borough.

Develop and implement a Breastfeeding Welcome Here action plan.

Develop and implement a strategy to improve the diet of Under 5's across the Borough through the nutritious Nursery Nosh programme.

Improve awareness of and access to mental health and emotional wellbeing services.

Train and increase the number of Take 5 Ambassadors.

Increase the number of opportunities for residents to participate in Take 5 based activities.

Implement a community resuscitation action plan to highlight CPR and AED use for out of hospital cardiac arrests.

Continue to address issues raised through the Multi agency Support Hub.

Continue to develop the prevention and reactionary work to hoarding throughout the Borough.

Improve opportunities in sport and physical activity.

Create more opportunities to get involved in sport of active activities.

Develop and deliver a positive mental health and wellbeing charter.

Improving the quality of life for our aging population - commitment to being an age friendly Borough following the world health organisation's eight domains.

Creation & implementation of the three year integrated Age Friendly Action Plan.

Development of an Antrim and Newtownabbey Older Person Voice group which will work with older people to ensure their issues, concerns and ideas are incorporated in all decision making.

Creation of an Age Friendly Partnership for Antrim and Newtownabbey which will be responsible for overseeing the implementation of the three year age friendly action plan.



Develop a Age Friendly communications strategy, including the development and issuing of the “News for You” age friendly newsletter to raise awareness around issues connected to living longer, including promoting participation in activities to maintenance or improve Physical, mental and emotional wellbeing.

Develop and promote intergenerational activities across the Borough.

Integrated approach to tackling poverty.

- To establish a cross-party steering group with a remit to develop a co-ordinated, comprehensive Anti-Poverty Strategy for Antrim and Newtownabbey Borough.
- To work in collaboration with community planning partners to tackle the effects of poverty, deprivation and inequality to have a positive impact on people’s daily lives.
- Develop a Tackling Poverty Strategy for ANBC.
- To establish a cross party and departmental working group to tackle poverty, deprivation and inequality.
- Family support programme and social supermarket schemes providing wrap-around support to residents identified as being at greater risk of poverty.
- Effectively utilising circular economy to support poverty through Community Fridges, school uniform and Christmas toy schemes.
- Targeted delivery against AAR and NR action plans in partnership with DFC and CVS.
- Development of policy guidance/framework which focuses on dignity in practice and prevention.
- Map current tackling Poverty activities.
- Improve awareness of current support services and provisions available across the Borough by creating a resource available to Council and other statutory services.
- Engage with community and voluntary groups to get an understanding of the needs within the Borough.
- Develop and promote and deliver a range of holistic training options for individuals facing deprivation.



ACTION LIST *Place*



ACTION

MEASURES/ INDICATORS

Improving access for all - supporting additional provisions for play and recreational facilities for all, including disabled people, across the Borough.

- Look to develop more walking trails.
- Creation of a marketing strategy to ensure that access for all opportunities are delivered and success can be measured.
- Increase in the number of memberships across the leisure centres.
- Continue to provide opportunities for people with a disability into our mainstream schemes and classes- e.g. Summer Scheme, Children's classes etc.
- Increase in the number of programmes delivered to section 75 Groups.
- Carry out an audit on how accessible facilities and play park are. Implement new actions based on findings.
- Development of accessible playgrounds. (Parks)
- Development of new sensory garden. (Ballyclare)

Increasing road safety - promoting safe travel across the Borough.

- Police and Community Safety Partnership Action Plan.

Sustaining clean and vibrant places.

- Creation of an action plan for each DEA area.
- Promotion of those villages that provide a clean and vibrant place to live.
- Continue to obtain accreditation and awards through Ulster in Bloom, Green Flag and NI Amenity Awards.
- Complete satisfaction surveys of parks and open space.



Developing housing led regeneration - supporting the delivery of additional social and affordable housing.

Production of Annual Housing Investment Plan and Commissioning Prospectus detailing projected need and the Social Housing.

Development Programme.

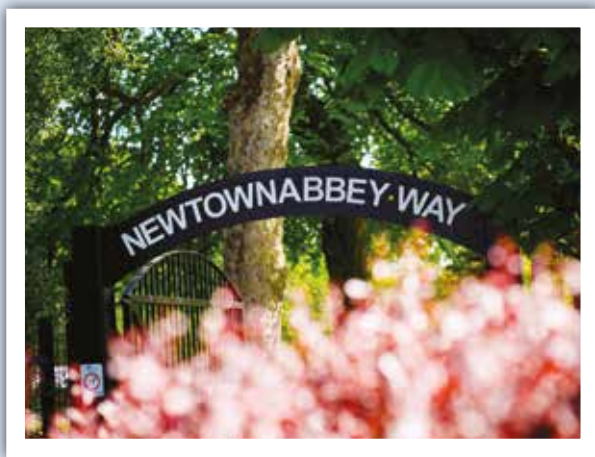
Creation of a forum for partners to share information of land assets they have that are surplus to their requirements and could be used to meet housing need (i.e. Council land zoned for housing in Ballyclare went straight to private market - this could have been discussed for social prior to sale).

Develop and review place shaping pilots in Glengormley, Ballynure, Toomebridge and Moneyglass.

Increase Council land available for social and affordable housing.

Stronger partnership working between Community Planning and Council Planners.

Collaborative approach with community planning partners in the delivery of regeneration projects, including town centre masterplans.



ACTION LIST

Prosperity

ACTION

MEASURES/ INDICATORS

Antrim and Newtownabbey is a leading and competitive place to start and grow a business.

The number of VAT/PAYE registered businesses.
Business survival rate, % of businesses still trading after 3yrs of being set up.

Our Borough has a culture of entrepreneurship, skills development and vocational training.

Percentage of the workforce in employment with qualifications at level 2 and above and level 4 and above.
Percentage of the workforce with no qualifications.
Percentage of the workforce classed as economically inactive.

Our Borough is a place to do businesses, developing transport, energy and broadband infrastructure.

The number of business births.
Business turnover: % of businesses with a turnover of less than £50k.
Broadband coverages (Superfast).

Our Borough provides opportunities for all to enable and support people to reach their full potential.

The % of 16-64 year olds in employment.
Gross all persons mean weekly pay.

The built heritage of our Borough is protected and sustainably regenerated to support economic prosperity.

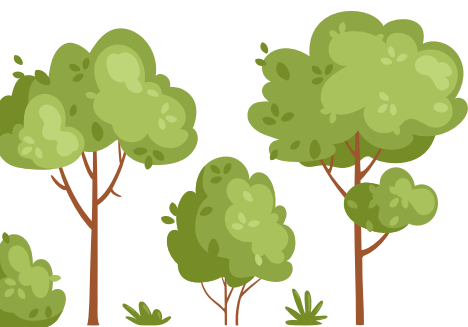
Number of regeneration projects undertaken to improve our towns and villages.
Number of projects completed to improve green/blue infrastructure.
Number of projects completed to improve sustainability and energy efficiency.



ACTION LIST Planet

ACTION

Promoting greater sustainability - sustaining and resourcing a more resilient society through conscientious practices.



MEASURES / INDICATORS

- Creation of 'Sustainability Champions' programme & awards.
- Creation of a Sustainability Policy and Strategy for the Council.
- Support and encourage projects which educate and encourage people to use sustainable travel.
- Development of a community growing programme.
- Increasing the number of 'Mens / Hens Sheds across the Borough.
- Increase the number of allotment projects across the Borough.
- Support community-based approaches to sustainable food.
- Support the implementation of the 'Muddy Boots' Initiative.
- Support projects that encourage people to use forms of sustainable travel i.e. Bike to Work Schemes.
- Create programmes that reduce transport poverty by promoting travel that is both sustainable and active.
- Increase in the development of shared footpaths and cycleway's.
- Increased advocacy for equitable, sustainable, and active transportation options.
- Increase the use of electric vehicle and improve access to charge points. (In both Sustain/ Climate)

Improving education and awareness - creation of learning and upskilling that supports the green economy and environmental protection.

- Creation of a carbon literacy project, including training
- Work in partnership with a range of providers to offer schools, local communities and business to create educational programmes in relation to environmental awareness and sustainability.
- Provide specific training for volunteers who work within environmental based projects.

Tackling climate change - minimising our environmental impact across the Borough.

- Delivery of the Bio-Diversity Strategy for the Borough.
- Map out the Carbon Footprint for the Borough.
- Develop and promote a range of circular economy projects.
- Reduce carbon emissions across the Borough in line with targets set by the Climate Change Act 2022.
- Identify and target funding opportunities to scale up nature based solutions.
- Divert waste from landfill Work towards achieving 70% recycling rate by 2030.
- Increase the use of electric vehicle and improve access to charge points. (In both Sustain/ Climate).
- Reduce overall energy consumption across the Borough.

Improving access to green spaces - promoting regeneration and access to green spaces across the Borough.

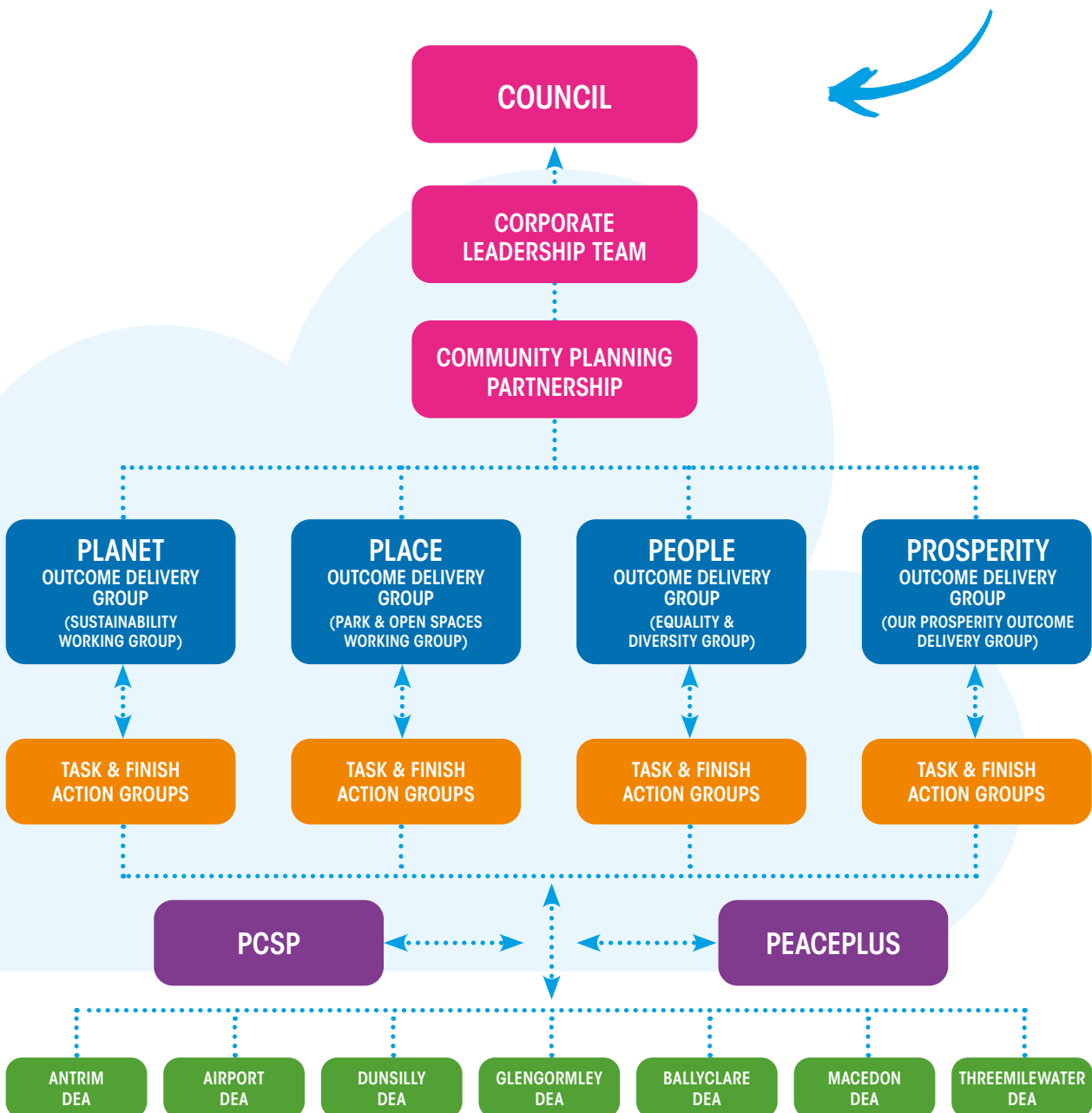
- Creation of an advocacy and lobbying group in relation to improving Green Spaces.
- Develop a green spaces regeneration Programme.
- Share knowledge about how managing urban green spaces and implementing adaptive practices can improve public health, reduce pollution, and build resilience to climate change.
- Improve access to green spaces like parks, gardens, greenways, streets, and other green areas can help communities that are at risk from climate change become more resilient.
- Secure funding to develop capacity and expand the number of greenways.
- Determine the viability of a greenway and possible path.



PROPOSED NEW *community* PLANNING STRUCTURE

In line with the new Antrim and Newtownabbey Borough Council Corporate Strategy and to reflect the emerging priorities of our Statutory Partners, the sustainability is now front and centre in these and the proposed structure reflects this.

By including a Planet Project Board, this gives us the opportunity to develop new programmes/ projects to help tackle Climate Change and increase the sustainability of existing activities within the remit of the Community Plan.





**OUR CITIZENS
ENJOY GOOD HEALTH
AND WELLBEING**

**OUR CITIZENS LIVE
IN CONNECTED, SAFE,
CLEAN AND VIBRANT
PLACES**

**OUR CITIZENS
BENEFIT FROM
ECONOMIC
PROSPERITY**

**OUR CITIZENS
ACHIEVE THEIR
FULL POTENTIAL**

**OUR VULNERABLE
PEOPLE ARE
SUPPORTED**



THE PLAN ON A *Page*

PEOPLE

ACTION 1.1

Creating a strong and vibrant community and voluntary sector - advocate, champion and maintain volunteering across the Borough.

ACTION 1.2

Championing physical and mental wellness - implement the take 5 framework within the workplace, schools, and the wider community.

ACTION 1.3

Improving the quality of life for our aging population - commitment to being an age friendly Borough following the world health organisation's eight domains.

ACTION 1.4

Integrated approach to tackling poverty.



PLACE

ACTION 2.1

Improving access for all - supporting additional provisions for play and recreational facilities for all, including disabled people, across the Borough.

ACTION 2.2

Increasing road safety - promoting safe travel across the Borough.

ACTION 2.3

Sustaining clean and vibrant places.

ACTION 2.4

Developing housing led regeneration - supporting the delivery of additional social and affordable housing.



PROSPERITY

ACTION 3.1

Antrim and Newtownabbey is a leading and competitive place to start and grow a business.

ACTION 3.2

Our Borough has a culture of entrepreneurship, skills development and vocational training.

ACTION 3.3

Our Borough is a place to do businesses, developing transport, energy and broadband infrastructure.

ACTION 3.4

Our Borough provides opportunities for all to enable and support people to reach their full potential.

ACTION 3.5

The built heritage of our Borough is protected and sustainably regenerated to support economic prosperity.



PLANET

ACTION 4.1

Promoting greater sustainability - sustaining and resourcing a more resilient society through conscientious practices.

ACTION 4.2

Improving education and awareness - creation of learning and upskilling that supports the green economy and environmental protection.

ACTION 4.3

Tackling climate change - minimising our environmental impact across the Borough.

ACTION 4.4

Improving access to green spaces - promoting regeneration and access to green spaces across the Borough.





ANTRIM CIVIC CENTRE

50 Stiles Way Antrim BT41 2UB
T. 028 9446 3113 F 028 9448 1324

MOSSLEY MILL

Carnmoney Road North Newtownabbey BT36 5QA
T. 028 9034 0000 F. 028 9034 0200

E. communityplanning@antrimandnewtownabbey.gov.uk
www.antrimandnewtownabbey.gov.uk/communityplan

  @ANBorough

